



CABLE REEL HANDLING CATALOG



WHEREVER THE JOB TAKES YOU,
COUNT ON JAMESON™



since
1956



JLIFT

ONE PERSON. NO TRAILER.

REMOTE CONTROL

With the push of a button, one person can easily load and go in minutes. Corded J-Lift control is included; with optional wireless remote control available separately.

DUAL ACTING HYDRAULICS

Dual action and dual load-holding hydraulic pump and cylinders raise and lower with equal force, which is extremely convenient in cold climates and with lighter spools. This also allows faster stopping with a fully loaded reel for safer operation. **Exceptional RAISE, LOWER & STOP Capabilities!**

POWDER COATED

For long life performance and corrosion resistance.

LIGHT KIT

Connect to truck's 4-pin trailer output for brake lights and turn signals.

Specifications	
Part Number	MTK-40
Dimensions	45" x 28" x 30"
Total Weight	293 Lbs.
Weight - Wiring	18 Lbs.
Power Source	12-Volt DC
Finish	Powder Coat
Hydraulic Pump	Dual Action with Corded Remote Control
Hydraulic Hoses	1/4" SAE, 5800 PSI
Cylinders	3000 PSI

Operating Specifications	
Maximum Reel Capacity	40" Wide x 48" Diameter Maximum
Maximum Lifting Capacity	1,000 Lbs.*
Hitch Required	Minimum Class IV Hitch
Hitch Recommended	Pintle Plate / Class V Hitch
Wiring Included	20', 4 AWG Harness With Jumper Clamps & Ring Terminal Options
* Minimum Class IV hitch required. Reel weight plus 293 lbs. must not exceed vehicle tongue weight.	



PORTABLE REEL BUCK

The all-new Jameson® Portable Reel Buck is a quick and easy way to set up strand and cable reels up to 54" diameter. The reel buck is designed to be easily moved about the job site using the handles on the frame and the spool as a wheel. The durable steel tube frame has a weight capacity of 850 lbs. and can withstand the toughest job sites. The reel buck is collapsible for quick load and unloading and is adjustable for different reel widths and heights.

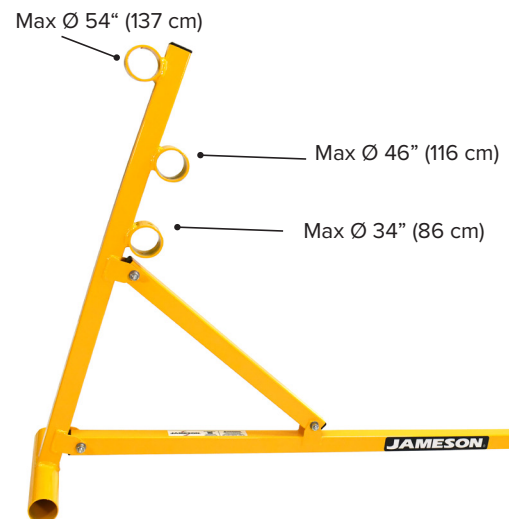
- Load Capacity: 850 lbs.
- Accommodates Reel widths up to 54" inch diameter
- Designed to work with Arbor Spindle up to 2"
- Heavy-duty adjustable steel frame
- Easy setup and breakdown for transportation

Can ship "small pack" via UPS, FedEx or DHL



Part Number	Description
RB-54	Portable Reel Buck

SPOOL DIAMETER CAPACITY



FIBER DRIVER

Fiber Driver is lightweight and ergonomic for duct cable installation. Minimizes buckling with optimized wheels for .3" wide cables. Weighing 1.4 lbs, reduces fatigue compared to manual pulling, offering faster installation from the reel. Contact Jameson for custom rollers.

- Single-user, hand-held operation for comfort
- Compact and lightweight, fits standard toolboxes
- Pulls and pushes fiber from supported spool
- Allows mid-span loading or unloading
- Functions in both forward and reverse
- Suitable for indoor or outdoor use
- Compatible with any cordless drill
- Handles flat-drop up to 300'

Part Number	Description
18-FFP1	Flat Drop Fiber Driver
PATENT PENDING	

Part Number	Description
FP200101	Fiber Driver Conduit Adapter, OD 18
FP200102	Fiber Driver Conduit Adapter, OD 16
FP200103	Fiber Driver Conduit AdapterR, OD 14
FP200104	Fiber Driver Conduit Adapter, OD 12.7
FP200105	Fiber Driver Conduit Adapter, OD 10

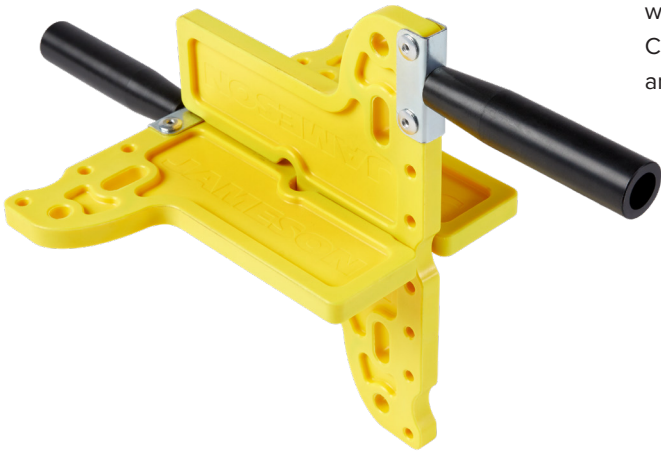


FIBER WINDER

The Fiber Winder is a cable management tool designed to maximize efficiency, keep workspaces organized, and provide a reliable solution for cable-intensive industries. Crafted from high-quality fiber-reinforced nylon, this versatile tool offers durability and functionality across various applications.

- Efficiency: Neatly winds excess cable.
- Compact Design: Holds 200ft., easy removal, and flat storage.
- Durability: High-quality fiber-reinforced nylon.
- Versatility: Ideal for various cables in telecom, construction, etc.

Part Number	Description
18-FW1	Cable Spooling Device



SPOOL MULE

The Jameson Spool Mule sets a new cable organization standard with its collapsible design, robust steel construction, and 27" axle for multiple spool use. It accommodates up to 36" diameter spools, saving money and reducing prep work. This versatile tool supports various cables like power, fiber, coax, and Cat-6, with built-in wheels and rubber feet for easy maneuvering without surface damage.

- Load Capacity: 100 lbs.
- 27" axle accommodates multiple spools simultaneously
- Heavy-duty steel frame
- Easy setup and breakdown for transportation

Part Number	Description
RB-36	Spool Mule
PATENT PENDING	





WHEREVER THE JOB TAKES YOU,
COUNT ON JAMESON™



JAMESONTOOLS.COM

800.346.1956