



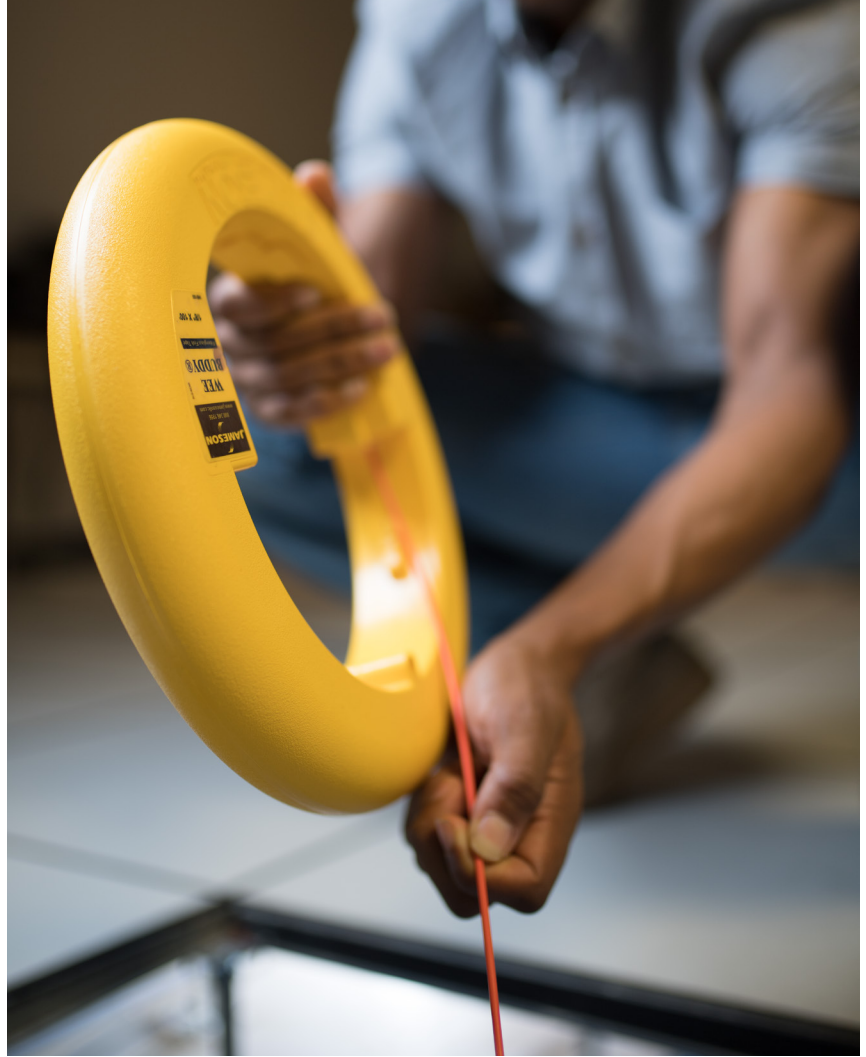
## FISH TAPE & FISH ROD CATALOG



WHEREVER THE JOB TAKES YOU,  
**COUNT ON JAMESON™**



since  
1956



## BUDDY FISH TAPE

### TELECOMMUNICATION & ELECTRICAL WIRING

Since 1980, the Jameson Buddy® System of rodders and fish tapes has evolved to become the most comprehensive in the industry.

Jameson fish tapes feature a round, flexible rod that slides easily over wires in occupied conduit, offering exceptional bending strength for maneuvering tight turns.

- Non-conductive fiberglass rod core with orange polymer jacket
- Smooth, round rod installs easily in empty or occupied conduit
- Round rod bends in all directions, unlike flat steel fish tapes



## BUDDY® FISH TAPE OVERVIEW



	Wee Buddy®		Flex Buddy™ Flexible Steel	Flex Buddy™ Non-Conductive Plastic Tip	Little Buddy®	Microduct Fisher™		
Features	<ul style="list-style-type: none"> <li>• Round rod flexes in all directions and slides easily over wires</li> <li>• Easy-grip canister</li> <li>• Smooth, non-binding payout and return</li> <li>• Snap-on accessory kit</li> </ul>		<ul style="list-style-type: none"> <li>• Polymer Mono-Twist Fish Tape with Flexible Steel Leader Tip</li> </ul>	<ul style="list-style-type: none"> <li>• Polymer Mono-Twist Fish Tape with Non-Conductive Plastic Tip</li> </ul>	<ul style="list-style-type: none"> <li>• Operates vertically or horizontally.</li> <li>• Feed eye and drag brake control payout.</li> </ul>	<ul style="list-style-type: none"> <li>• Low profile pulling eye is permanently mounted.</li> <li>• Moves smoothly in microduct as small as 6mm.</li> </ul>		
			<ul style="list-style-type: none"> <li>• Durable single-strand spiral design for fast low-friction fishing</li> <li>• High-Flex, Non-Kink, Single-Strand Design</li> <li>• Large Comfort-Grip Ergonomic Handle designed for smooth and quick payout</li> </ul>					
Rod Diameter	1/8" (3.2mm)		1/4" (5.5mm)		3/16" (4.8mm)	1/8" (3.2 mm)		
Lengths Available	50-150' (15.2–45.7m)		100-200'(2.54-5.08m)		150-300' (45.7–91.4m)	160'/350' (50.3/106.7m)		
Recommended Conduit	Conduit As Small As 1/2" (16mm)				3/4"–1-1/2" (21–41mm)	Microduct As Small As 6 mm		
Bend Radius	1.5" (38.1mm)		<0.5" (12.5mm)		2.5" (63.5mm)	1.5" (38.1mm)		
Pull Strength	200 Lbs. (90.5kg)		550 lb (250kg)	400 lb (181kg)	300 lbs. (135.7kg)	200 lbs (90.5kg)		
Accessory Kits	Included 8-18-AK	N/A	N/A		Included 10-316-AK	N/A		
Dimensions L x W x H	12.5" x 2.0" (31.8 x 5.1 cm)		22"x17"x2" (55.8x43.2x5cm)		22" x 17" x 7" (55.9 x 43.2 x 17.8 cm)	12.5" x 2.0" (31.8 x 5.1 cm)	20" x 17" x 10.3" (50.8 x 43.2 x 26.2 cm)	22" x 17" x 7" (55.9 x 43.2 x 17.8 cm)
Weights	2.3 - 3.0 lbs.(1.0 - 1.4 kg)		6 - 7.8 lb (2.7 - 3.5 kg)		12.6 - 15.5 lbs. (5.7 - 7.0 kg)	2.4 lbs. (1.1 kg)	10 lbs. (4.5 kg)	11 lbs. (5.0 kg)
End Ferrule	#10-32 Male		#12-24 Male Metal with 6" steel cable leader	#12-24 Male Plastic	#12-24 Male			





## WEE BUDDY® - WITHOUT ACCESSORY KIT

### 1/8" Diameter Rod - Lightweight Portable Fish Tape

Wee Buddy's round rod slides easily over existing wires, especially at bends, with a smooth, non-binding payout and return to canister.

Easy-grip design allows for more efficient pushing and pulling when fishing telecom, voice, data or electrical conduit.

Patented canister features snap-on accessory kit.

- Non-Conductive Fiberglass Rod
- Bend Radius: 1.5"
- 200-lb. pull/tensile strength
- Available With or Without Accessory Kit
- Dimensions: 12.5" Diameter x 2"

Size	Part Number	In Display Package
50' x 1/8"	8-18-50	8-18-50-R
100' x 1/8"	8-18-100	8-18-100-R
150' x 1/8"	8-18-150	8-18-150-R



## WEE BUDDY® - WITH ACCESSORY KIT

### 1/8" Diameter Rod - Lightweight Portable Fish Tape

Wee Buddy's round rod slides easily over existing wires, especially at bends, with a smooth, non-binding payout and return to canister.

Easy-grip design allows for more efficient pushing and pulling when fishing telecom, voice, data or electrical conduit.

Patented canister features snap-on accessory kit.

- Non-Conductive Fiberglass Rod
- Bend Radius: 1.5"
- 200-lb. pull/tensile strength
- Available With or Without Accessory Kit
- Dimensions: 12.5" Diameter x 2"

Size	Part Number	In Display Package
50' x 1/8"	8-18-50K	8-18-50K-R
100' x 1/8"	8-18-100K	8-18-100K-R
150' x 1/8"	8-18-150K	8-18-150K-R



## LITTLE BUDDY®

### 3/16" Diameter Rod - For Conduit 0.75" - 1.5" Diameter

Lightweight, portable unit typically used for running inside and outside conduit drops as well as home drops from the hand-hole box to a building. Also used for light pole and control wiring or walker ducts.

- Operates vertically or horizontally
- Drag brake and safety feed eye control payout
- Non-Conductive Fiberglass Rod
- 3/16" OD Fiberglass Rod
- 2.5" Bending Radius
- 300-lb Pull/Tensile Strength
- Accessory Kit included
- Dimensions: 22" x 17" x 7"

Size	Part Number	In Display Package	Replacement Reel
150' x 3/16"	10-316-150	10-316-150-R	10-150RR
200' x 3/16"	10-316-200	10-316-200-R	10-200RR
250' x 3/16"	10-316-250	10-316-250-R	10-250RR
300' x 3/16"	10-316-300	10-316-300-R	10-300RR

\* Items Ending In "-R" Are Provided In Display-Ready Packaging





## MICRODUCT FISHER™ HANDHELD

**1/8" Diameter Rod - Lightweight canister with easy-grip design**

Microduct Fisher features all fiberglass rod construction for safety and easy handling. Smooth, round polymer jacket will not nick or scratch fiber or duct wall.

Low profile pulling eye is permanently mounted on rod to move easily in fiber microducts as small as 6 mm, where traditional fish tapes are too large.

- 3.2 mm OD Fiberglass Rod
- 1.5" Bending Radius

Size	Part Number	In Display Package
165' x 1/8"	8-18-165MDR	8-18-165MDR-R



## MICRODUCT FISHER™ II WITH HANDLE

**1/8" Diameter Rod - Portable Handheld Canister for Easy Transport**

Microduct Fisher II ideal for pulling phone wire, network cable or speaker wire through walls, occupied and empty electrical conduit.

- Non-Conductive Fiberglass Rod
- Bend Radius: 1.5"
- Ideal for occupied and empty conduit measuring as small as 6 mm
- The fish tape is designed with a robust brake for controlling the payout speed
- Accessory Kit included
- Dimensions: 22" Diameter x 7"

Size	Part Number	In Display Package	Replacement Reel
350' x 1/8"	10-18-350MDR	10-18-150-MDR-R	10-350RR-MDR



## MICRODUCT FISHER™ II ON STAND

**1/8" Diameter Rod - For Conduit Measuring as Small as 6 mm**

The Microduct Fisher features all fiberglass rod construction for safety and easy handling. Smooth, round polymer jacket will not nick or scratch fiber or duct wall.

- Drag brake and safety feed eye to control pay out.
- 1.5" Bending Radius
- Overall Weight: 16 lbs.
- The fish tape is designed with a robust brake for controlling the payout speed
- Ideal for occupied and empty conduit measuring as small as 6 mm
- Accessory Kit included
- Dimensions: 22" x 17" x 7"

Size	Part Number	In Display Package	Replacement Reel
350' x 1/8"	10-18-350MDRS	10-18-350MDRS-R	10-350RR-MDR

\* Items Ending In "-R" Are Provided In Display-Ready Packaging

Rod is marked in 5' increments. Add 'MM' to part number for metric measure (1m increments)

## ACCESSORIES



Wee Buddy Accessory Kit

Little Buddy Accessory Kit



Pulling Eye

Splice Ferrule

Flexible Spring Leader

Flexible Spring Leaders With Ball

Repair Adhesive & Emery Cloth

Accessories	Description	Wee Buddy®	Little Buddy®	Microduct Fisher®
Wee Buddy Accessory Kit	Plastic Case, Flexible Leaders (2), Pulling Eye (2), Splice Ferrule (2), End Ferrule (2), Adhesive and Emery Cloth	8-18-AK		
Little Buddy Accessory Kit	Flexible Leaders (2), Pulling Eye (2), Splice Ferrule, End Ferrule (2), Adhesive and Emery Cloth		10-316-AK or 10-316-AK-R	
Fixed Pulling Eye	Attach pull line or pulling grip to rod	8-160 or 8-160-R	10-160	
Flexible Leader w/Sm. Tip	Guide rod through bends, sweeps, and misalignments	8-163 or 8-163-R		
Flexible Leader w/Lg. Tip	Guide rod through bends, sweeps, and misalignments	8-162 or 8-162-R	10-163	
Flexible Leader w/Eyelet	Guide rod through bends, sweeps, and misalignments		10-162	
Pulling Eye Repair Kit	Pulling Eye, Adhesive, and Emery Cloth			8-146MDR or 8-146MDR-R
Splice Repair Kit	Splice Ferrule, Adhesive, and Emery Cloth	8-140 or 8-140-R	10-140 or 10-140-R	8-140MDR or 8-140MDR-R
End Ferrule Repair Kit	End Ferrule, Adhesive, and Emery Cloth	8-146 or 8-146-R	10-146	
Repair Adhesive	Adhesive and Emery Cloth	10-167		

## EZ-REEL PRE-LOADED REPLACEMENT ROD ON REEL

### EZ-REEL PRE-LOADED REPLACEMENT ROD ON REEL

Jameson Buddy® Conduit Rodders and Fish Tapes are highly durable, designed for tough job sites. Our repair kits enable customers to splice rods or fix end-fittings to keep their equipment in service. In cases of severe damage, replacing the entire spool may be necessary, but it's a challenging and time-consuming task. In response to customer feedback, Jameson introduced EZ-REEL™ pre-loaded replacement reels, enhancing the speed and safety of replacing damaged rod material.



Size	Part Number	Reel
1/8" x 350'	10-350RR-MDR	Microduct Fisher II
3/16" x 150'	10-150RR	Little Buddy®
3/16" x 200'	10-200RR	Little Buddy®
3/16" x 250'	10-250RR	Little Buddy®
3/16" x 300'	10-300RR	Little Buddy®

\* Items Ending In "-R" Are Provided In Display-Ready Packaging

# flex

## BUDDY™

### POLYMER FISH TAPE

#### Flex Buddy Polymer Fish Tape

- Durable single-strand spiral design for fast low-friction fishings
- Combines the stiffness to push long runs, with the flexibility to handle multiple 90° bends
- Non-conductive polymer material resists kinking for durable long-lasting performance on the job site







## FLEX BUDDY™ FLEXIBLE STEEL TIP

### Polymer Fish Tape with Flexible Steel Leader Tip

Combines the stiffness to push long runs, with the flexibility to handle multiple 90° bends. Non-conductive polymer material resists kinking for durable long-lasting performance on the job site.

- Polymer Mono-Twist Fish Tape with Flexible Steel Leader Tip
- Durable single-strand spiral design for fast low-friction fishing
- High-Flex, Non-Kink, Single-Strand Design
- Large Comfort-Grip Ergonomic Handle designed for smooth and quick payout

Size	Description
5-316-100FST	100' Polymer Mono-Twist Fish Tape with Flexible Steel Leader Tip
5-316-150FST	150' Polymer Mono-Twist Fish Tape with Flexible Steel Leader Tip
5-316-200FST	200' Polymer Mono-Twist Fish Tape with Flexible Steel Leader Tip



## FLEX BUDDY™ NON-CONDUCTIVE PLASTIC TIP

### Polymer Mono-Twist Fish Tape with Non-Conductive Plastic Tip

Combines the stiffness to push long runs, with the flexibility to handle multiple 90° bends. Non-conductive polymer material resists kinking for durable long-lasting performance on the job site.

- Polymer Mono-Twist Fish Tape with Non-Conductive Plastic Tip
- Durable single-strand spiral design for fast low-friction fishing
- High-Flex, Non-Kink, Single-Strand Design
- Large Comfort-Grip Ergonomic Handle designed for smooth and quick payout

Size	Description
5-316-100NCT	100' Polymer Mono-Twist Fish Tape with Non-Conductive Plastic Tip
5-316-150NCT	150' Polymer Mono-Twist Fish Tape with Non-Conductive Plastic Tip
5-316-200NCT	200' Polymer Mono-Twist Fish Tape with Non-Conductive Plastic Tip

*\* Electric shock hazard: Do not use near live circuits. Always wear proper PPE when using this product.*

## FIBER DRIVER

Fiber Driver is lightweight and ergonomic for duct cable installation. Minimizes buckling with optimized wheels for .3" wide cables. Weighing 1.4 lbs, reduces fatigue compared to manual pulling, offering faster installation from the reel. Contact Jameson for custom rollers.

- Single-user, hand-held operation for comfort
- Compact and lightweight, fits standard toolboxes
- Pulls and pushes fiber from supported spool
- Allows mid-span loading or unloading
- Functions in both forward and reverse
- Suitable for indoor or outdoor use
- Compatible with any cordless drill
- Handles flat-drop up to 300'

Part Number	Description
18-FFP1	Flat Drop Fiber Driver
PATENT PENDING	

Part Number	Description
FP200101	Fiber Driver Conduit Adapter, OD 18
FP200102	Fiber Driver Conduit Adapter, OD 16
FP200103	Fiber Driver Conduit AdapterR, OD 14
FP200104	Fiber Driver Conduit Adapter, OD 12.7
FP200105	Fiber Driver Conduit Adapter, OD 10



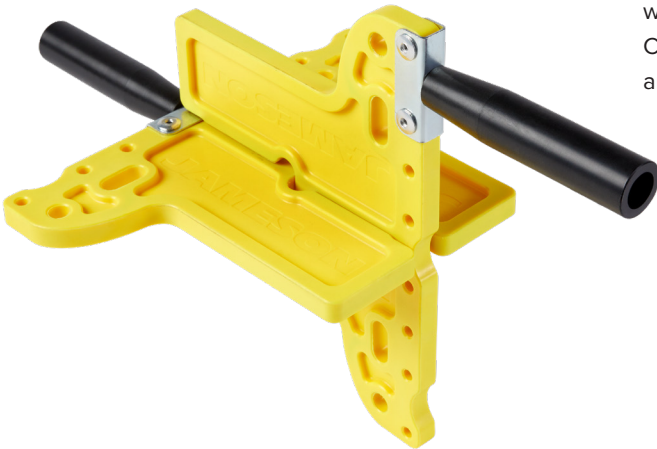
## FIBER WINDER

The Fiber Winder is a cable management tool designed to maximize efficiency, keep workspaces organized, and provide a reliable solution for cable-intensive industries. Crafted from high-quality fiber-reinforced nylon, this versatile tool offers durability and functionality across various applications.

- Efficiency: Neatly winds excess cable.
- Compact Design: Holds 200ft., easy removal, and flat storage.
- Durability: High-quality fiber-reinforced nylon.
- Versatility: Ideal for various cables in telecom, construction, etc.



Part Number	Description
18-FW1	Cable Spooling Device



## SPOOL MULE

The Jameson Spool Mule sets a new cable organization standard with its collapsible design, robust steel construction, and 27" axle for multiple spool use. It accommodates up to 36" diameter spools, saving money and reducing prep work. This versatile tool supports various cables like power, fiber, coax, and Cat-6, with built-in wheels and rubber feet for easy maneuvering without surface damage.

- Load Capacity: 100 lbs.
- 27" axle accommodates multiple spools simultaneously
- Heavy-duty steel frame
- Easy setup and breakdown for transportation

Part Number	Description
RB-36	Spool Mule
PATENT PENDING	





## Glow Fish Rods

### HIGH STRENGTH AND FLEXIBILITY

## GLOW FISH RODS

**NON-CONDUCTIVE  
FIBERGLASS RODS  
FOR INSIDE WIRING**



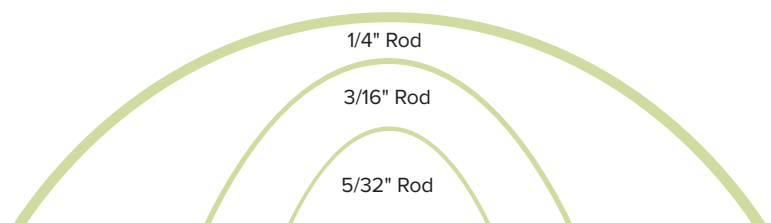
Jameson is the original manufacturer of non-conductive fiberglass glow rods. Kits are perfect for running wire through drop ceilings, attics, floors, walls and crawl spaces. Its high strength and flexibility allows you to handle turns easily without breakage. All of our rods feature the same size threaded ferrules for maximum versatility.

#### CHOOSING A GLOW ROD SIZE FOR YOUR JOB

Flexibility Increases As Rod Diameter Decreases

- 1/4" for long spans requiring greater rigidity  
Minimum Bend Radius: 6" Tensile/Pull Strength: 750 lbs
- 3/16" for short spans or in limited space  
Minimum Bend Radius: 4" Tensile/Pull Strength: 500 lbs
- 5/32" for making tight turns offering extreme flexibility with high strength  
Minimum Bend Radius: 3.5" Tensile/Pull Strength: 300 lbs

Using the same size ferrules (#8-32), different diameter rods can be used together in any combination for ultimate on-the-job customization.







**1/4" DIAMETER GLOW RODS, 12'**

Part Number	Package Length
7-34T	4'
Three 4' x 1/4" Rods. Includes One Bullet Nose with Eyelet, One Hook	



**1/4" DIAMETER GLOW RODS, 18'**

Part Number	Package Length
7-63T	3'
Six 3' x 1/4" Rods. Includes One Bullet Nose with Eyelet, and One Hook	



**1/4" DIAMETER GLOW RODS, 24'**

Part Number	Package Length
7-36-23T	6'
Three 6' x 1/4" Rods, Two 3' x 1/4" Rods. Includes One Bullet Nose with Eyelet, One Hook	



**3/16" DIAMETER GLOW RODS, 10.5'**

Part Number	Package Length
7S-718T	18"
Seven 18" x 3/16" Rods. Includes One Bullet Nose with Eyelet, One Hook	



**3/16" DIAMETER GLOW RODS, 15'**

Part Number	Package Length
7S-35T	5'
Three 5' x 3/16" Rods. Includes One Bullet Nose with Eyelet, One Hook	



**3/16" DIAMETER GLOW RODS, 20'**

Part Number	Package Length
7S-45T	5'
Four 5' x 3/16" Rods. Includes One Bullet Nose with Eyelet, One Hook	



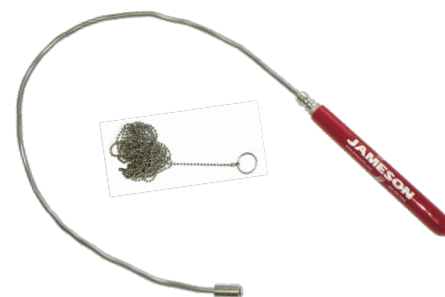
**5/32" DIAMETER GLOW RODS, 6'**

Part Number	Package Length
7SS-6	*
One 6' x 5/32" Rod with Permanently Mounted Bullet Nose with Eyelet On Each End of Rod	
* Single rods shipped with hanging tag, not in clear plastic kit tube	



**5/32" DIAMETER GLOW RODS, 18'**

Part Number	Package Length
7SS-36T	6'
Three 6' x 5/32" Rods. Includes One Bullet Nose with Eyelet, One Hook	



**FLEXI-MAGNET**

Part Number	Description
7-07A	Flexi-Magnet Kit (Retriever and Ball Chain with Ring)
Bendable retriever features a powerful magnetic tip that grabs chain inside wall to pull wire. Includes 10' length of ball chain with ring to hold in place.	



**COMBO GLOW ROD KITS, 30'**

Part Number	Package Length
7S-65K	6'
Six 3/16" x 5' Rods. Includes One Bullet Nose with Eyelet, One Hook, One Whisk, One Ball Chain Bullet Nose	



**COMBO GLOW ROD KITS, 34'**

Part Number	Package Length
7-8VK	6'
Two 1/4" x 6' Rods, Two 3/16" x 5' Rods, and One 5/32" x 6' Rod. Includes One 5/32" x 6' Rod with Permanently Mounted Bullet Eye On Each End, One Hook, and One Whisk	



**COMBO GLOW ROD KITS, 35'**

Part Number	Package Length
7-8-1K	6'
Two 1/4" x 5' Rods, Two 1/4" x 2.5' Rods, Four 3/16" x 5' Rods. Includes Two Bullet Nose with Eyelet, Two Hooks, One Whisk	



**ACCESSORY - BULLET NOSE WITH EYELET**

Part Number	Description
7-00A	Bullet Nose with Eyelet (Attach pull line to rod)



**ACCESSORY - HOOK**

Part Number	Description
7-01A	Hook (Grasp and retrieve)



**ACCESSORY - BULLET NOSE WITH RING**

Part Number	Description
7-02A	Bullet Nose with Ring (Pull line or grab with hook)



**ACCESSORY - WHISK**

Part Number	Description
7-03A	Whisk (Guide rod; avoid obstacles)



**ACCESSORY - BALL CHAIN BULLET NOSE**

Part Number	Description
7-04A	Ball Chain Bullet Nose (Use with Magnet for retrieval)



**ACCESSORY - MAGNET**

Part Number	Description
7-05A	Magnet (Retrieve Ball Chain)



## ACCESSORY - LUMINESCENT WHISK

Part Number	Description
7-08A	For low-light applications. Accepts all Jameson attachments



## ACCESSORY - LED LIGHT TIP

Part Number	Description
7-09A	Omni-directional light illuminates dark spaces



## 7-06AK ACCESSORY KIT 6 PC. Fish Rod Kit

Part Number	Description
7-00A	Bullet Nose with Eyelet (Attach pull line to rod)
7-01A	Hook (Grasp and retrieve)
7-02A	Bullet Nose with Ring (Pull line or grab with hook)
7-03A	Whisk (Guide rod; avoid obstacles)
7-04A	Ball Chain Bullet Nose (Use with Magnet for retrieval)
7-05A	Magnet (Retrieve Ball Chain)



## 7-10AK ACCESSORY KIT 7 PC. Fish Rod Kit

Part Number	Description
7-00A	Bullet Nose with Eyelet (Attach pull line to rod)
7-01A	Hook (Grasp and retrieve)
7-02A	Bullet Nose with Ring (Pull line or grab with hook)
7-04A	Ball Chain Bullet Nose (Use with Magnet for retrieval)
7-05A	Magnet (Retrieve Ball Chain)
7-08A	Luminescent Whisk (For low-light applications. Accepts all Jameson attachments)
7-09A	LED Light Tip (Omni-directional light illuminates dark spaces)



## ACCESSORY - STORAGE CASE

Part Number	Description
7-5B	Fish Rod Rigid Storage Case







**NON-CONDUCTIVE  
FIBERGLASS RODS  
FOR INSIDE WIRING**

Yellow Jacket™ Coated Fish Rods from Jameson are perfect for fishing wire and cable with confidence and ease in any environment. Our tough, durable coated fish rods provide the strength and versatility you need when pulling wire and cable in suspended ceilings, raised floors, attics, crawlspaces, or interior wall cavities.

#### **Splinter Shield™ Protective Coating**

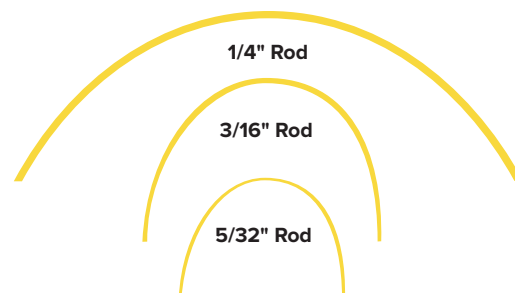
Resists abrasion and eliminates painful fiberglass splinters, allowing better control and glove-free use by installers.

#### **Exceptional Bend Strength**

Fiberglass reinforced polyester core with protective polypropylene coating provides best-in-class bend strength for use in tight bend applications.

#### **Three Available Rod Diameters**

Individual kits and combo kits offer choice of Low, Mid, and High-Flex rod performance.





## LOW-FLEX COATED FISH ROD KITS, 16'

Part Number	Description
7C-82T	16' Low-Flex Fish Rod Kit
(8) 2' Low-Flex Fish Rods, LED Light Tip (7-09A), Hook Tip (7-01A), and Bullet Tip with Eyelet (7-00A)	



## LOW-FLEX COATED FISH ROD KITS, 15'

Part Number	Description
7C-37T	15' Low-Flex Fish Rod Kit
(3) 5' Low-Flex Fish Rods, LED Light Tip (7-09A), Hook Tip (7-01A), and Bullet Tip with Eyelet (7-00A)	



## MID-FLEX COATED FISH ROD KITS, 12'

Part Number	Description
7SC-62T	12' Mid-Flex Fish Rod Kit
(6) 2' Mid-Flex Fish Rods, LED Light Tip (7-09A), Hook Tip (7-01A), and Bullet Tip with Eyelet (7-00A)	



## MID-FLEX COATED FISH ROD KITS, 15'

Part Number	Description
7SC-35T	12' Mid-Flex Fish Rod Kit
(3) 5' Mid-Flex Fish Rods, LED Light Tip (7-09A), Hook Tip (7-01A), and Bullet Tip with Eyelet (7-00A)	



## HIGH-FLEX COATED FISH ROD KITS, 15'

Part Number	Description
7SSC-35T	15' High-Flex Fish Rod Kit
(3) 5' High-Flex Fish Rods, LED Light Tip (7-09A), Hook Tip (7-01A), and Bullet Tip with Eyelet (7-00A)	



## MULTI-FLEX COATED FISH ROD KITS, 25'

Part Number	Description
7C-45-15T	25' Multi-Flex Fish Rod Kit
(4) 5' Low-Flex Fish Rods, (1) 5' Mid-Flex Fish Rod, LED Light Tip (7-09A), Hook Tip (7-01A), and Bullet Tip with Eyelet (7-00A)	



## MULTI-FLEX COATED FISH ROD KITS, 30'

Part Number	Description
7C-30KT	30' Multi-Flex Fish Rod Kit
(2) 5' Low-Flex Fish Rods, (2) 5' Mid-Flex Fish Rods, (2) 5' High-Flex Fish Rods, LED Light Tip (7-09A), Hook Tip (7-01A), Bullet Tip with Eyelet (7-00A), Whisk Tip (7-08A)	



## MULTI-FLEX COATED FISH ROD KITS, 60'

Part Number	Description
7C-60KB	60' Multi-Flex Fish Rod Kit
(6) 5' Low-Flex Fish Rods, (3) 5' Mid-Flex Fish Rods, (3) 5' High-Flex Fish Rods, LED Light Tip (7-09A), Hook Tip (7-01A), Bullet Tip with Eyelet (7-00A), Whisk Tip (7-08A), Magnet Tip (7-05A), Ball Chain Tip (7-04A), and Rigid Nylon Carry Case (7-5B)	



WHEREVER THE JOB TAKES YOU,  
**COUNT ON JAMESON™**



**JAMESONTOOLS.COM**

800.346.1956